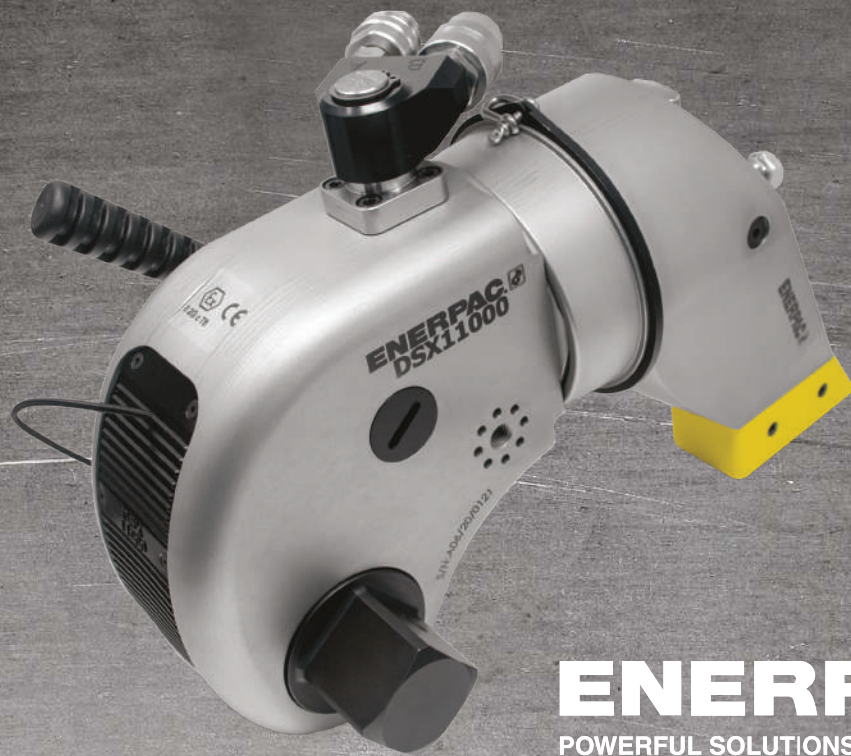




# ENERPAC DSX SQUARE DRIVE ALUMINUM TORQUE WRENCHES

Strength, safety,  
superior performance  
and ergonomic design.

Ideal for use  
in high places on  
petrochemical, refinery,  
wind and offshore sites.



**ENERPAC**   
POWERFUL SOLUTIONS. GLOBAL FORCE.



## THE NEW STANDARD IN TORQUE WRENCHES

The DSX makes the ideal choice when you need a simple, lightweight, strong and safe torque wrench. Enjoy critical safety features designed to prevent dropping of on-site components. The new DSX features a compact, high-strength unbody design, which provides a small operating radius without sacrificing endurance.



# RAISING THE BAR FOR INDUSTRY SAFETY

## Work-at-Height Connection

Built-in, work-at-height safety tether

## Fully Retained Reaction Arm

Patented, fully retained reaction arm with easy-to-use quick release helps prevent injuries when working at height

## Secured Square Drive

Retained quick-release push-button

## Safety and Performance

High-strength, lightweight aluminum, slimline design suited for complete operator safety.

## Fully enclosed drive for maximum safety

Built-in, work-at-height safety tether connection

## Retained quick release push-button

Patented, easy-to-use, quick-release retained reaction arm

## Fine-tooth ratchet

Prevents the tool from 'locking on'

# SIMPLICITY ACCURACY COMPATIBILITY

## Simple to Use

- Multi-direction 360° x 180° high-flow aluminum hose swivel
- Push-button square drive and reaction arm for fast changes and adjustments
- Easily accessible work-at-height connection point
- Fewer moving parts make the DSX simpler to operate, maintain and repair
- Robust ergonomic positioning handle comes standard

## Accurate in Performance

- Constant torque outputs with an accuracy of  $\pm 3\%$
- 35° Rotation angle with rapid return stroke for fast operation

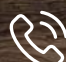
Compatible DSX Series Ergonomic Wrenches	Ergonomic Handle (Standard)
DSX1500, 3000, 5000	ENPD01
DSX11000	ENPD02
DSX25000	EYE01C001

# SELECT THE IDEAL TOOL FOR YOUR JOB

S-Series					DSX-Series					RSL-Series				
Part Number	Max Torque (ft-lbs)	Weight (lbs)	Unit of Measure (lbs)	List Price	Part Number	Max Torque (ft-lbs)	Weight (lbs)	Unit of Measure (lbs)	List Price	Part Number	Max Torque (ft-lbs)	Weight (lbs)	Unit of Measure (lbs)	List Price
S1500X	1,440	7.0	0.98	\$5,529	DSX1500	1,441	4.8	0.94	\$4,970	RSQ1500ST	1,408	7.2	0.94	\$4,710
S3000X	3,225	12.3	1.30	\$6,961	DSX3000	3,233	10.6	1.26	\$5,850	RSQ3000ST	3,080	13.0	1.25	\$6,106
S6000X	6,150	20.2	1.57	\$10,145	DSX5000	5,635	17.8	1.50	\$7,565	RSQ5000ST	5,305	22.0	1.52	\$8,625
										RSQ8000ST	7,862	26.5	1.52	\$9,615
S11000X	11,175	34.7	1.95	\$12,827	DSX11000	11,524	31.7	1.89	\$11,350	RSQ11000ST	11,154	36.6	1.88	\$10,899
										RSQ19000ST	18,843	64.6	2.50	\$12,555
S25000X	26,150	70.8	2.52	\$16,719	DSX25000	24,057	71.5	2.25	\$15,750	RSQ28000ST	28,002	72.4	2.50	\$14,240



24/7 Service - Call Us

 **832-271-5120**

520 Dallas St. League City, TX 77573

**aztecbolting.com**